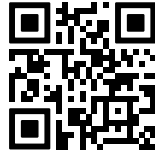


# THUNDER ARMOR



SCAN ME TO WATCH  
INSTALLATION VIDEO GUIDE

## INSTALLATION INSTRUCTIONS

**Inspect for damaged or missing components.**  
Contact Thunderstone Manufacturing, LLC  
Phone: [402] 435-4249  
Email: warranty@thunderstonemfg.com

**This cover does not work with drop in bed liners!**

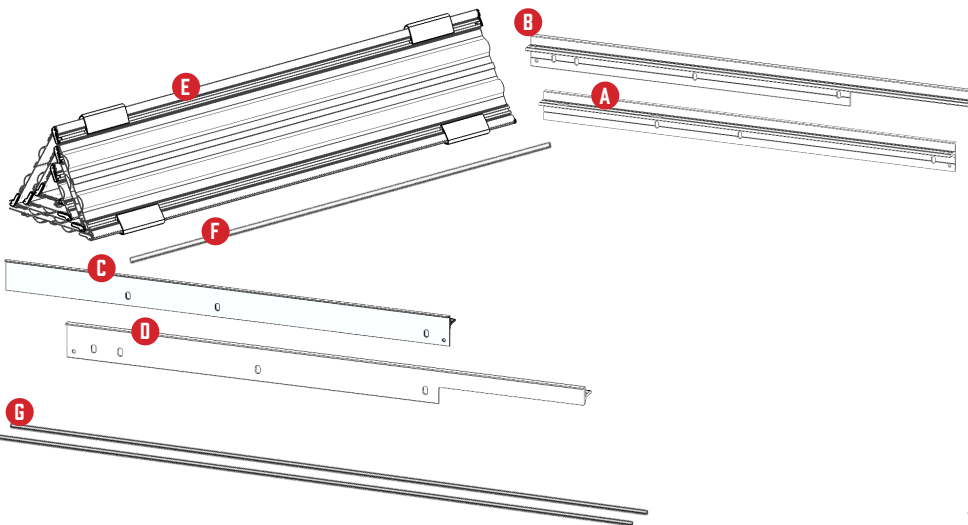


### WARRANTY REGISTRATION IS REQUIRED

You must register your **Thunder Armor Tonneau Cover** within 30 days of original purchase at **Thunderstonemfg.com** to qualify for warranty coverage.



WARRANTY  
REGISTRATION



#### PARTS INCLUDED:

- A** [1] Passenger Side Rail Front
- C** [1] Driver Side Rail Front
- E** [1] Triangle Roll Cover
- F** [1] Bulkhead Seal
- G** [2] Slat Seals

#### ADDED PARTS/HARDWARE FOR STANDARD OR LONG BOX:

- B** [1] Passenger Side Rail Rear
- D** [1] Driver Side Rail Rear
- H** [4] Clamps
- P** [2] Side Rail Tie Brackets
- Q** [4] 1/4"-20 Hex Head Bolts
- R** [4] 1/4"-20 Flat Head Screws
- S** [8] 1/4"-20 Nuts
- J** [8] 5/16"-18 Lock Washers
- K** [4] 5/16"-18 Bolts
- L** [20] 5/16" Washers
- O** [4] 5/16"-18 Lock Nuts

#### TOOLS REQUIRED:

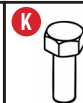
- 7/16", 1/2" Wrench and Socket
- 5/32" Allen Wrench

#### TOOLS RECOMMENDED:

- Pliers
- Safety Glasses
- Gloves
- Isopropyl Alcohol

#### HARDWARE INCLUDED:

- H** [8] Clamps
- I** [4] 1/4"-20 Carriage Bolts
- J** [4] 1/4" Lock Washers
- K** [8] 5/16"-18 Bolts
- L** [20] 5/16" Washers
- M** [4] 1/4" Spacers
- N** [4] 1/4" Self-Retaining Washers
- O** [8] 5/16"-18 Lock Nuts
- P** [1] Alcohol Wipe (not pictured)

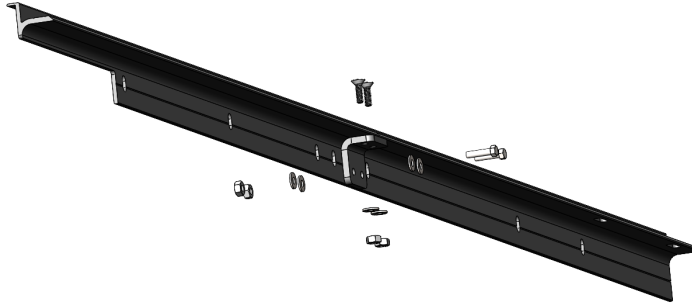


## STEP 1

*(Standard and long boxes have a two-piece rail. Short boxes have a single piece rail and do not require step 1).*

Assemble Driver side, rails [C/D] using Tie Plate [P X1], 1/4" Hex Bolt [Q X2], 1/4" Flat Head Cap Screw [R X2], 5/16" Washer [L X4], 1/4" Lock Washer [J X4], and 1/4"-20 Nut [S X4] as shown. Torque to 96 in-lbs.

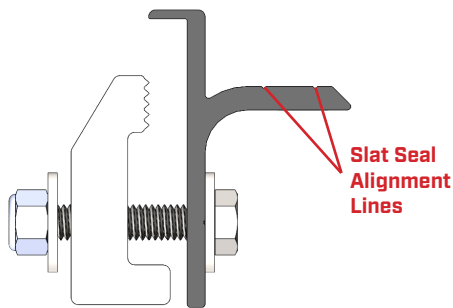
Repeat this process for passenger side.



## STEP 2

Attach clamp [H] to side rail with 5/16"-18 Bolt [K X1], 5/16" Washer [L X2], and 5/16"-18 Lock Nut [O X1] per each clamp as shown. **Leave bolts loose.**

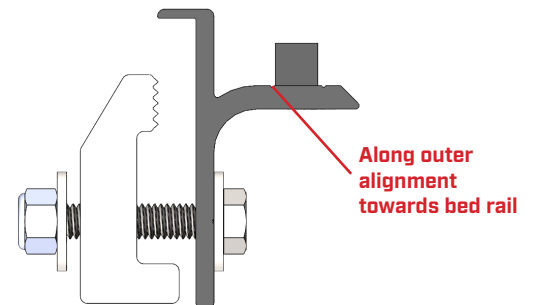
Repeat for all mount locations on side rails.



## STEP 3

First, clean side rail surface for slat seal with alcohol wipe [P]. Peel the adhesive back off the slat seal [G] and attach to the side rail. Trim excess material as needed.

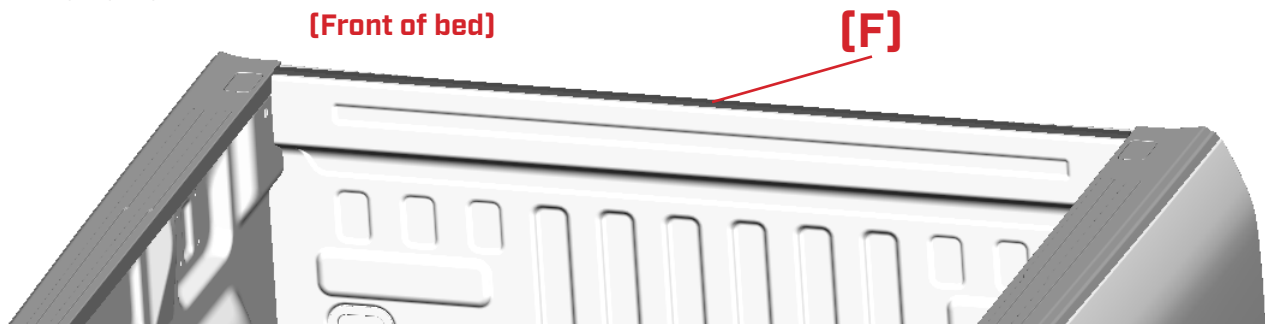
Repeat this process for the opposite side.



## STEP 4

Clean the bulkhead on the front of the truck bed with alcohol wipe [P]. Remove the backing from the adhesive of bulkhead seal [F] and apply the seal to the bulkhead a 1/4" from the inside ledge of the bed.

Trim excess seal material.

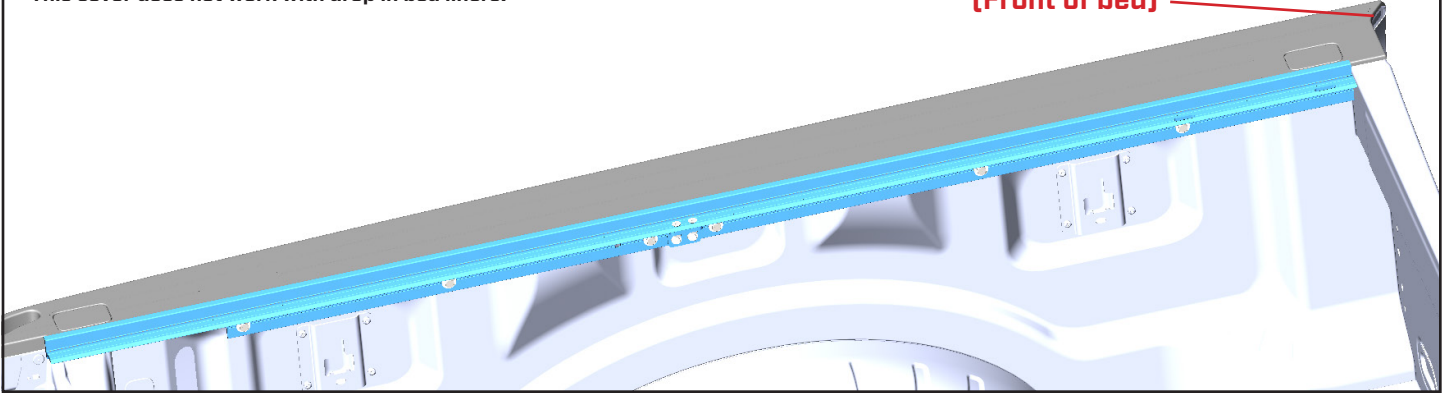


## STEP 5

Position the side rail so it is pushed toward the front of the bed and the lip is sitting on top of the bed rail.

**This cover does not work with drop in bed liners!**

**(Front of bed)**



## STEP 6

Tighten the rail clamps fully (120 'in-lbs. torque), starting from the front (cab side) and work your way towards the tailgate. Keep downward pressure on the rail to ensure the rail lip is sitting flat against the bed rail.

Repeat steps 5 and 6 for the opposite side.

**Caution:** Do not over tighten clamp as it may distort bed rail on cap.



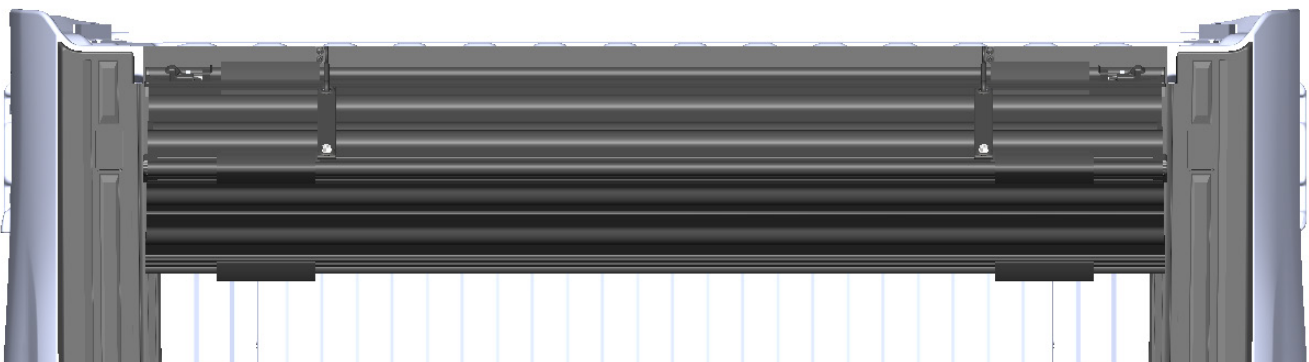
## STEP 7

Double check that both rails are installed, and all clamps are tightened in place. Then, place the rolled cover on the rails at the front of the bed with the retaining strap D-ring facing the cab.

**\*Team lift should be used to install cover due to weight.**

**\*Stay clear of pinch points to avoid serious injury.**

**\*It is a good idea to place a moving blanket or other protective barrier between cover assembly and cab of truck to prevent accidental damage to truck cab.**

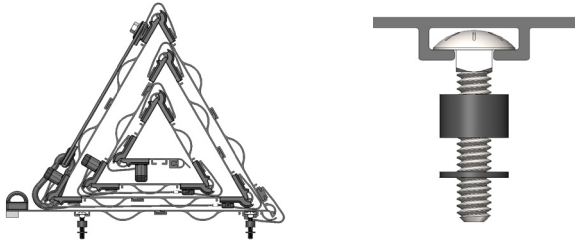


## STEP 8

Carefully lift up the side of the cover to insert the carriage bolts (I X2) into the T-slot groove on the inside of the cover. Add 1/4" spacer (M X1) to each carriage bolt and secure with 1/4" self-retaining washer (N X1).

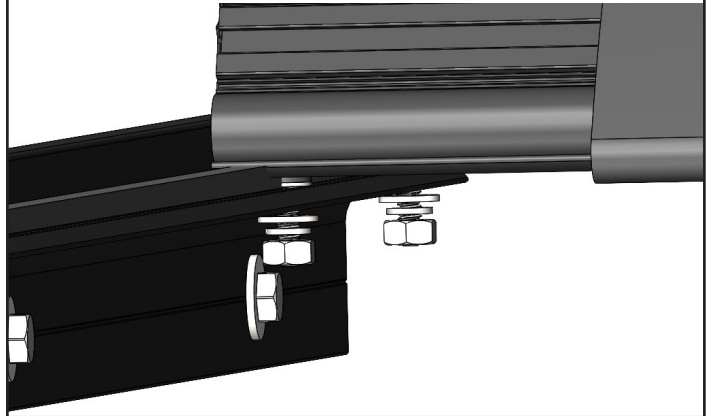
Line up and drop the carriage bolts into the slots on the side rail while keeping them in the cover T-slot grooves.

Repeat this process for both sides.



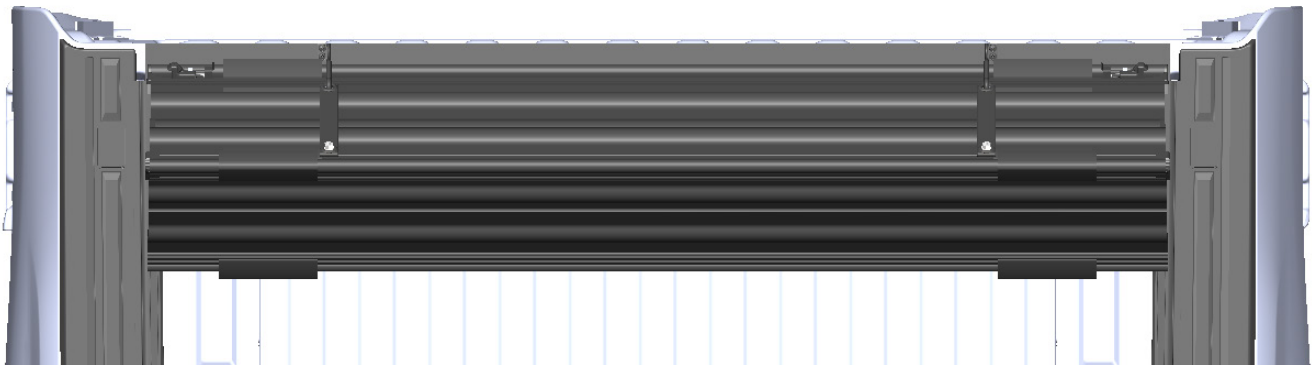
## STEP 9

Install the carriage bolts mounting hardware loosely underneath the Clamp Rail on both sides with the 5/16" Washers (L X4), 1/4" Lock Washers (J X4), and 1/4"-20 Nuts (S X4).



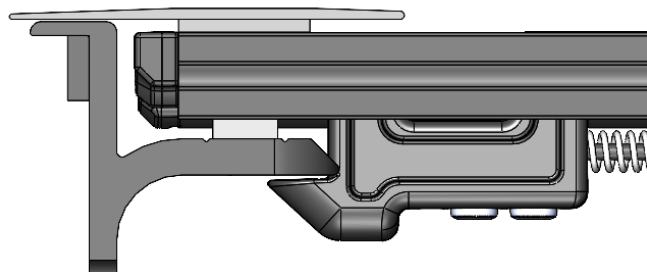
## STEP 10

Carefully unroll cover keeping it centered between the side rails. Once laying flat on the mounting rails, pull the cover towards the tailgate so that the end slat of cover overlaps the mounting rail by 1/8" to 1/4". Then slowly close the tailgate by hand, pushing the cover forward, until the tailgate latches.



## STEP 11

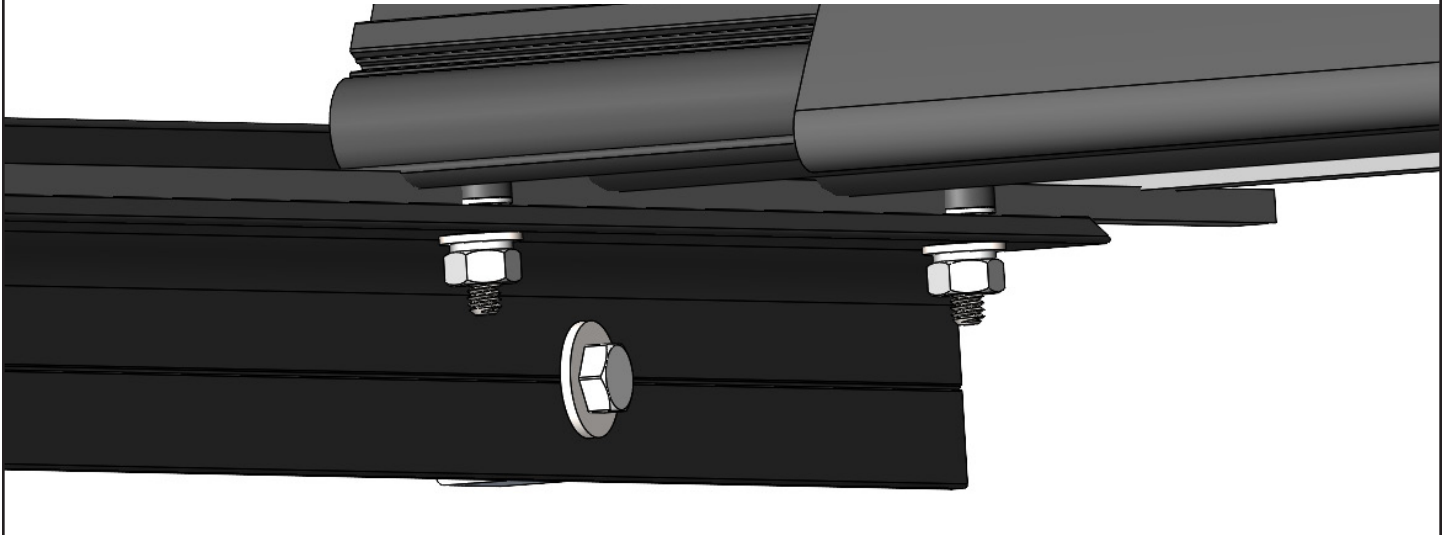
Check that the tailgate closes against the cover's rear bulb seal and that the latches on both sides are fully engaged with the clamp rail (if the latches are not engaging properly or the tailgate does not seal against the rear bulb seal, realignment is required).



## STEP 12

Slowly and carefully roll the tonneau cover to the rolled-up position maintaining alignment and forward mounting position. Then, tighten the 1/4"-20 nuts until the tonneau cover is secured tightly to the mounting rails.

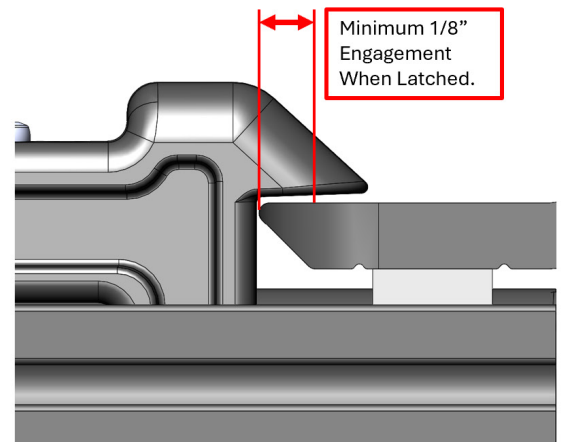
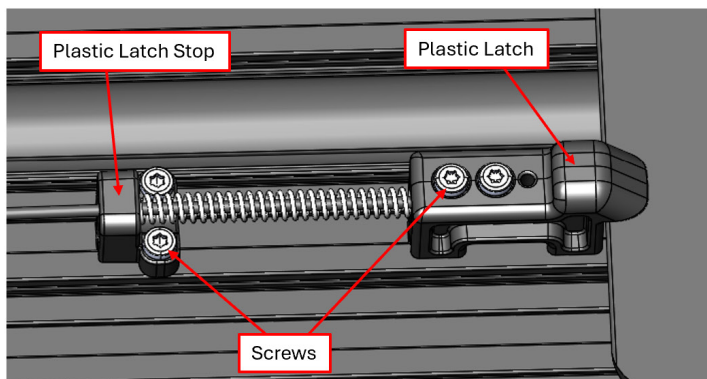
Unroll the cover to the closed position, double-checking alignment before use. Realign as necessary. Tighten 1/4"-20 nuts to 96 in-lbs. when alignment is complete.



## STEP 13

Because truck beds can vary slightly in size, verify the functionality of each of the cover latches (two per side for short and standard boxes, three per side for long boxes). If any latch does not latch or unlatch properly, adjust its position. Each latch must have a minimum of 1/8" engagement when latched for proper operation. Perform the following adjustment for each affected latches.

Using a T15 wrench, loosen the screws on the plastic latch stop without removing the screw completely. Move the latch stop so that the latch is fully engage in its relaxed position (fully extended). You may also need to loosen the screws on the plastic latch to pull more slack out of the cable. When the latch is positioned, tighten the screws to 9-11 in-lbs (exceeding 15 in-lbs can lead to damaging the plastic or loosening over time).

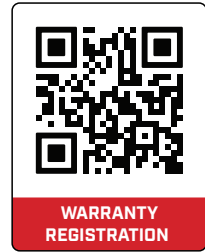


# WARRANTY



## WARRANTY REGISTRATION IS REQUIRED

You must register your **Thunder Armor Tonneau Cover** within 30 days of original purchase at **Thunderstonemfg.com** to qualify for warranty coverage.



## Thunder Armor Tonneau Cover – Limited 5-Year Warranty

### Coverage:

Thunderstone Manufacturing warrants each **Thunder Armor Tonneau Cover** to be free from defects in materials and workmanship for **five (5) years** from the original retail purchase date. This warranty applies only to the **original purchaser** and is **non-transferable**.

### What's Covered:

If a manufacturing defect is confirmed, Thunderstone Manufacturing will, at its discretion, **repair or replace** the product. A **Return Goods Authorization (RGA)** is required before any return. Shipping charges may apply.

### What's Not Covered:

This warranty does **not** cover:

- Damage from misuse, abuse, accidents, or improper installation
- Normal wear and tear, fading, or cosmetic deterioration
- Improper cleaning or use of harsh chemicals
- Alterations or modifications to the product
- Consequential or incidental damages (such as loss of time or use)

Use only **mild, non-corrosive soap and water** for cleaning. Improper care may void warranty.

### Filing a Claim:

To submit a claim, contact the **Thunderstone Manufacturing Warranty Department** and provide:

- Original proof of purchase
- Name, address, phone, and email
- Product serial/lot number (underside of cover)
- Photos and a description of the issue

### Disclaimer:

This limited warranty represents the **sole warranty** for Thunder Armor products. All other express or implied warranties—including merchantability or fitness for a particular purpose—are disclaimed to the fullest extent permitted by law. Thunderstone Manufacturing's liability is limited to repair or replacement of the product only.

### Governing Law:

This warranty is governed by the laws of the state where Thunderstone Manufacturing is headquartered.